

# **How Should I Treat Distal LM Bifurcation Disease: Patient Centered Approach**

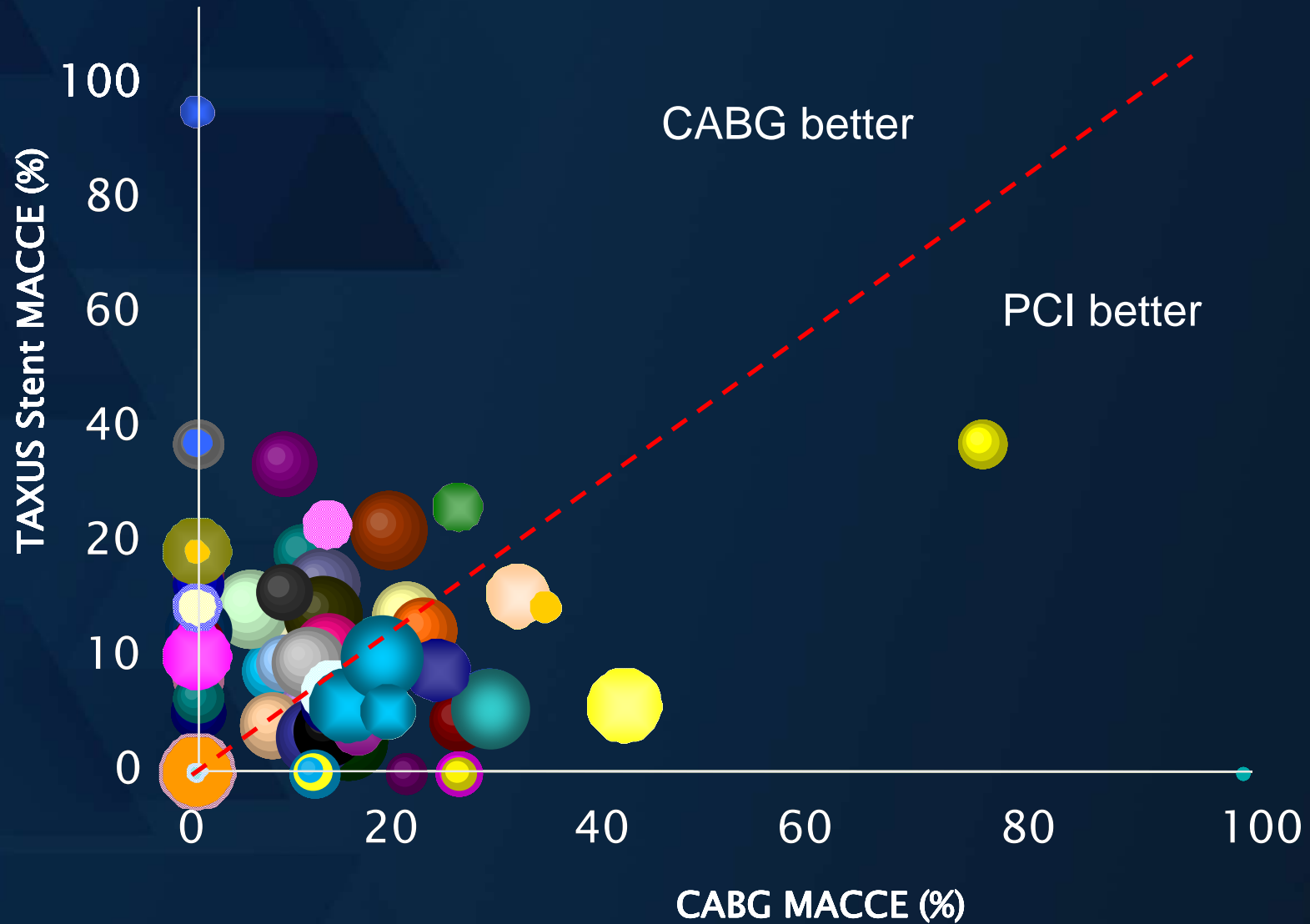
**Thierry Lefèvre, MD  
ICPS, Massy, France**

# Disclosure

- Proctoring for Abbott, Terumo and Boston

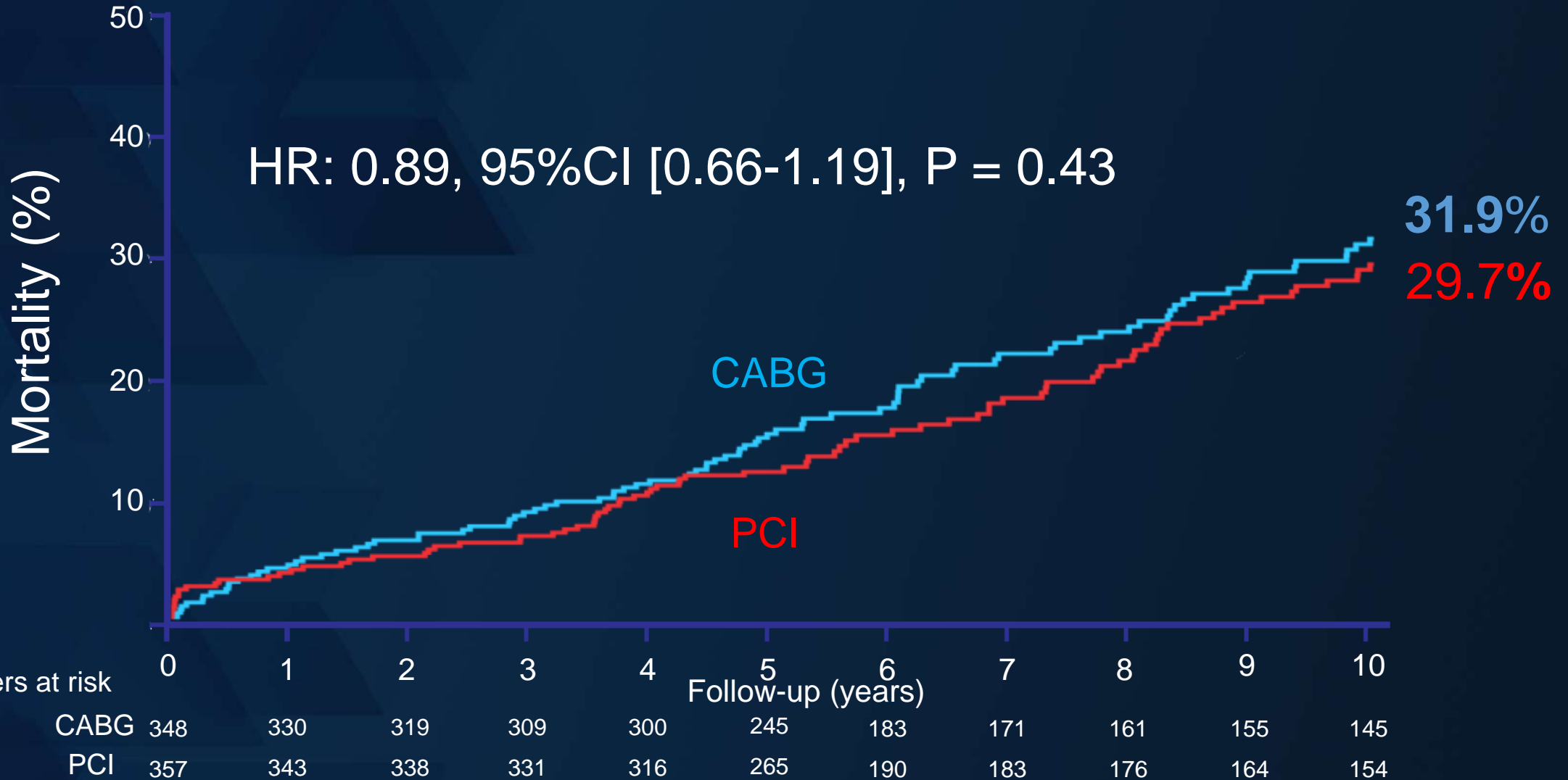
**The most important things  
that we have learned from Syntax and Excel**

# Syntax: 12 month MACCE

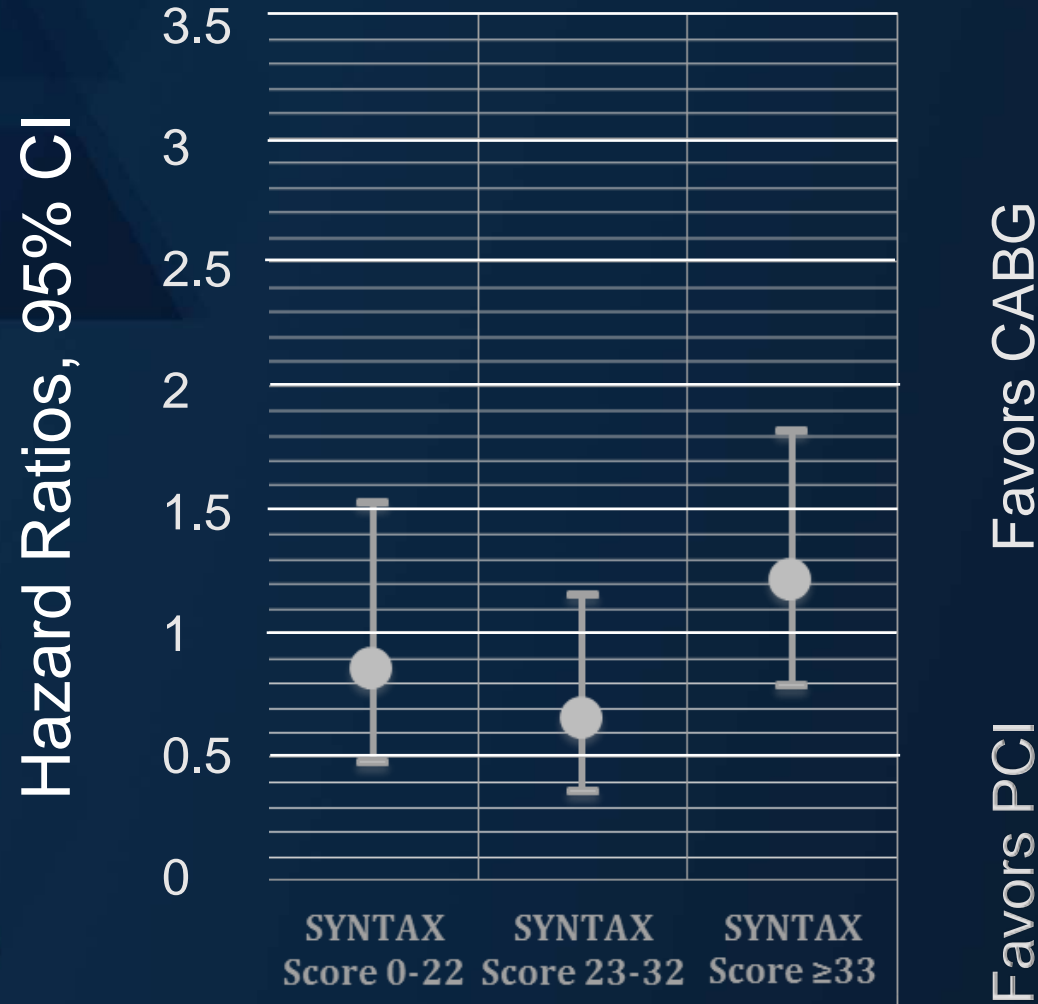


# SYNTAXES 10 Year, Left Main

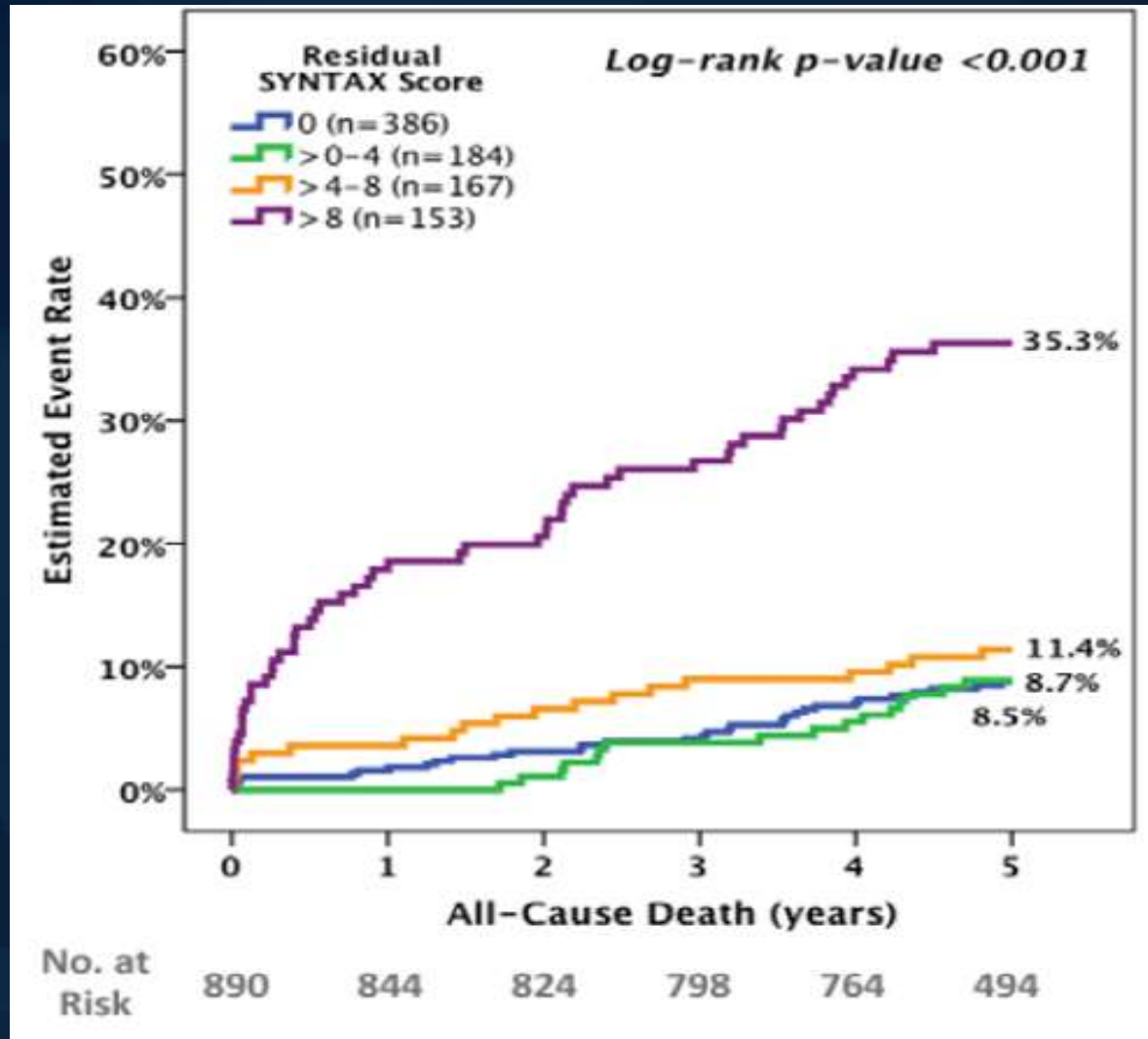
HR: 0.89, 95%CI [0.66-1.19], P = 0.43



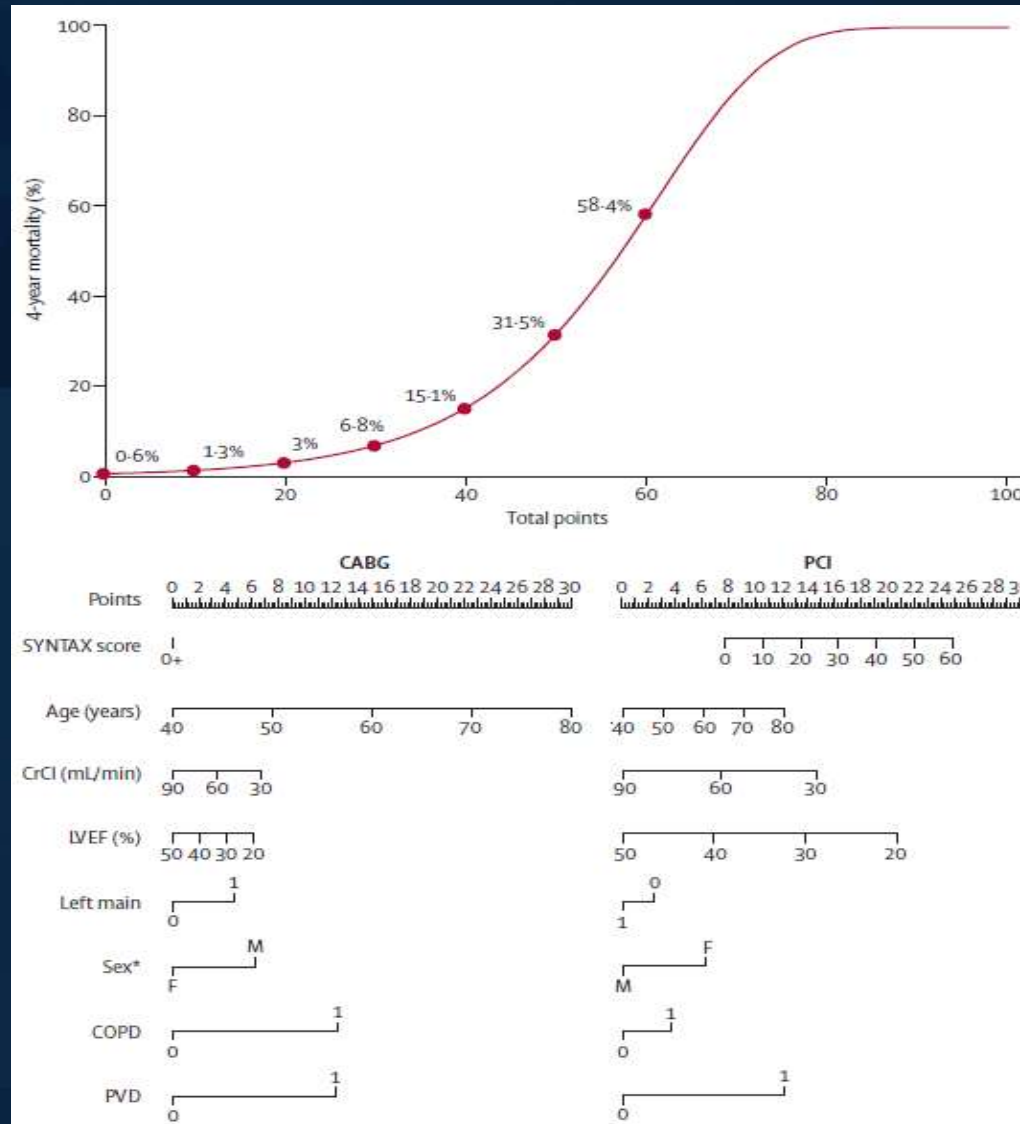
# SYNTAXES 10 Year, Left Main



# Residual Syntax Score

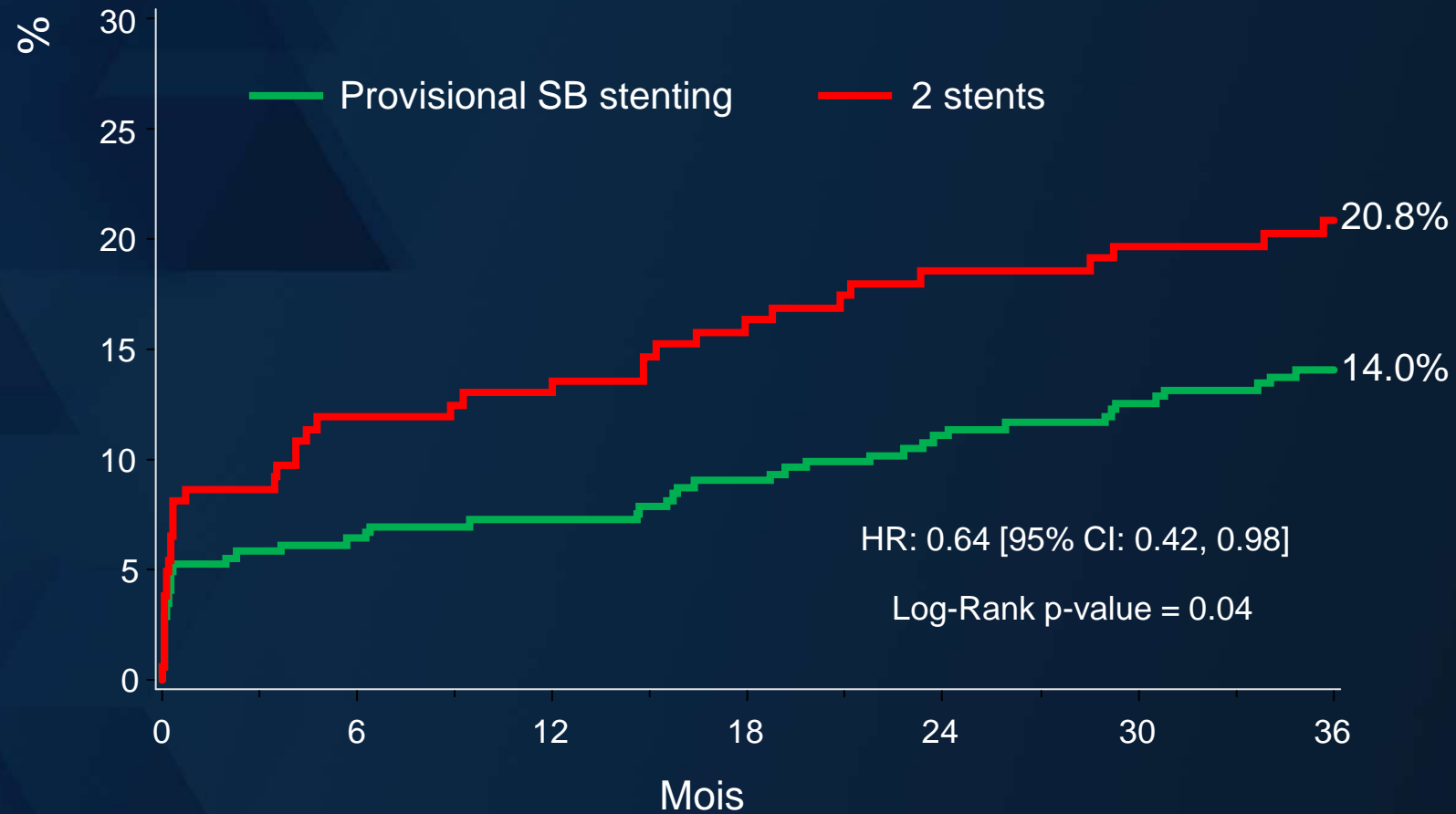


# Syntax Score 2





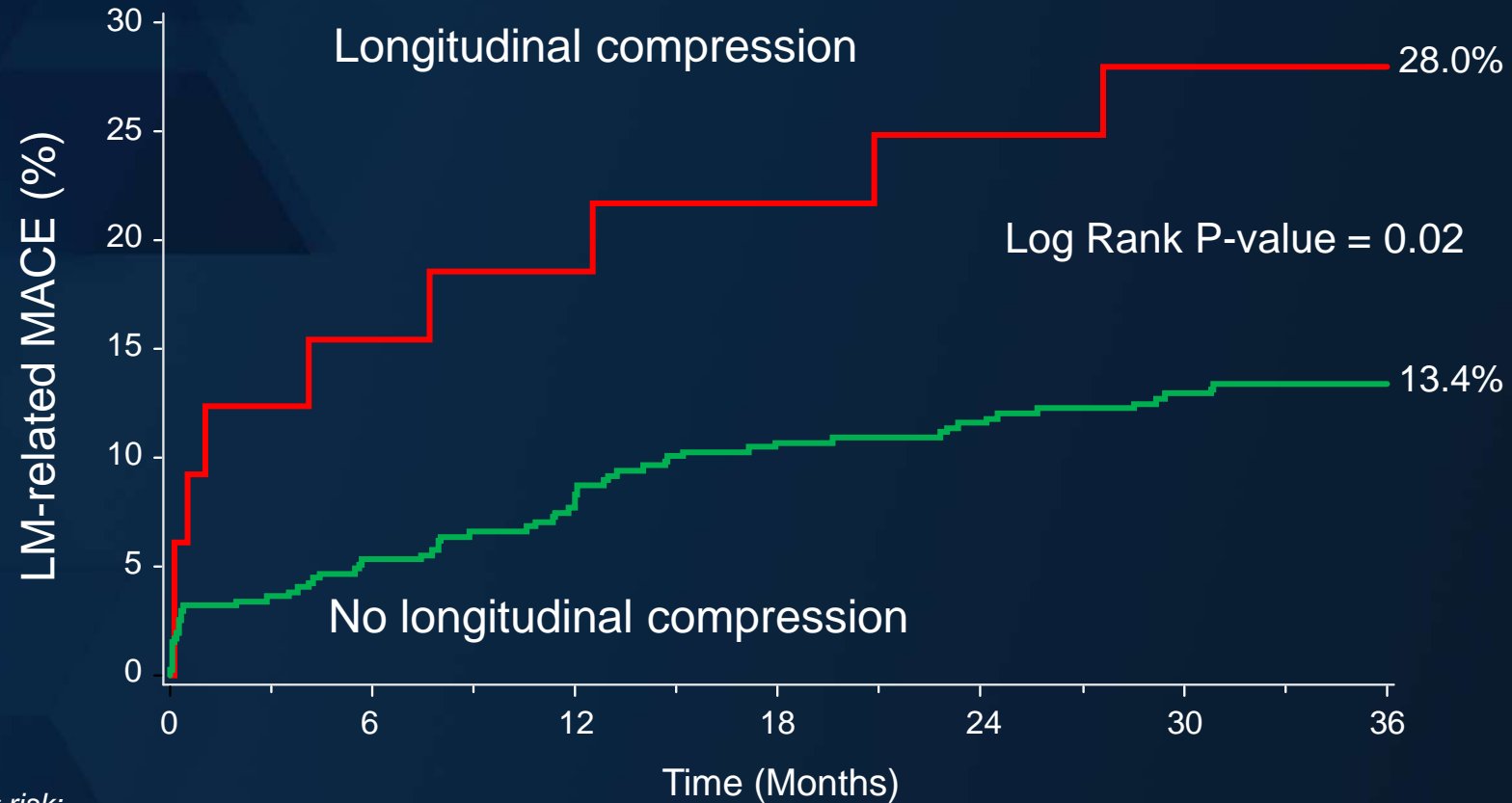
# Death, MI or Stroke in Excel



Number at risk:

1 stent	344	322	318	309	302	296	268
2 stents	185	162	159	150	146	142	129

# Longitudinal compression in Excel: 7%



Number at risk:

Stent deformation	33	27	26	25	24	23	23
No stent deformation	473	443	426	407	397	383	341

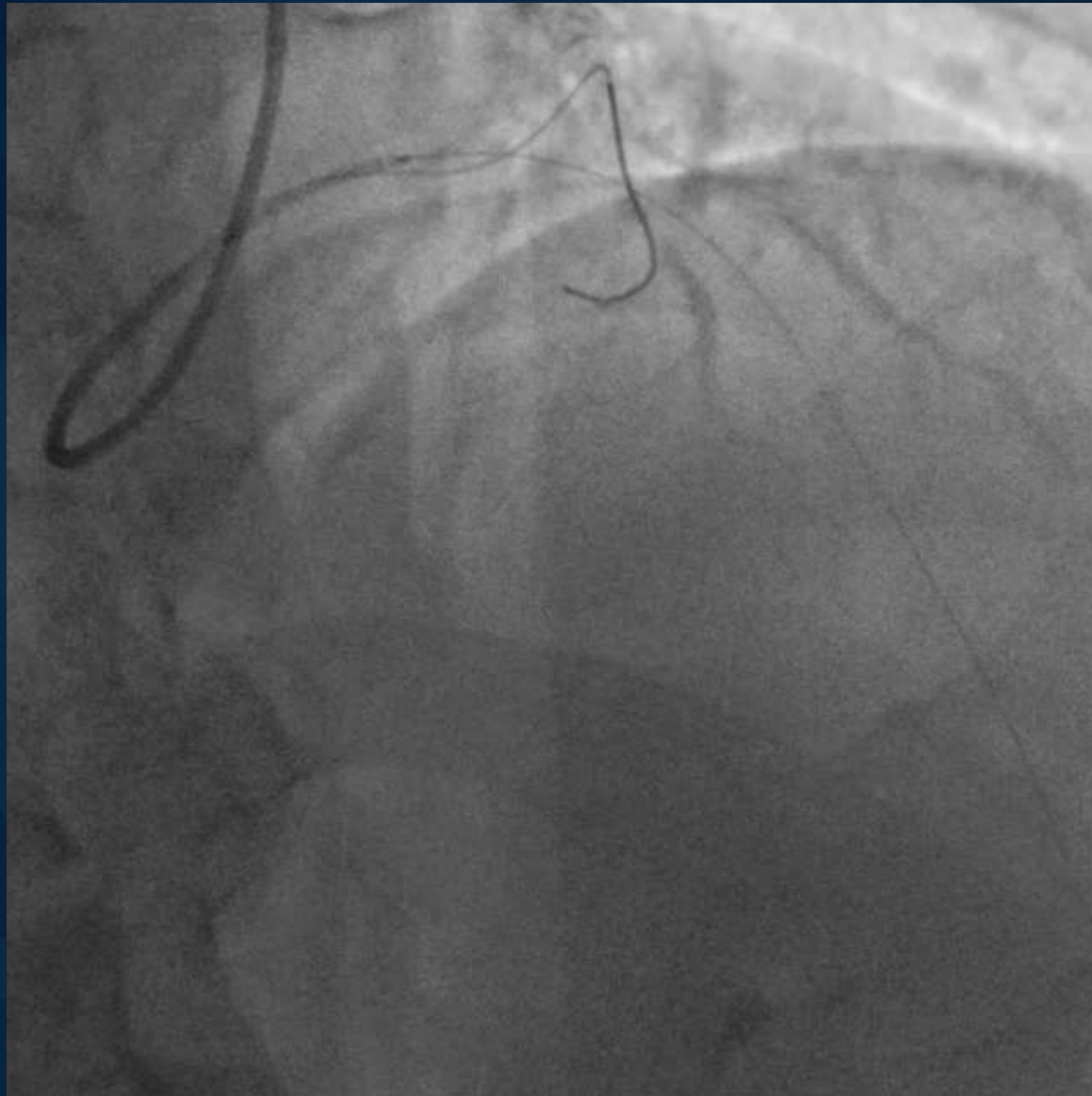
# 56 yrs old male patient, NSTEMI



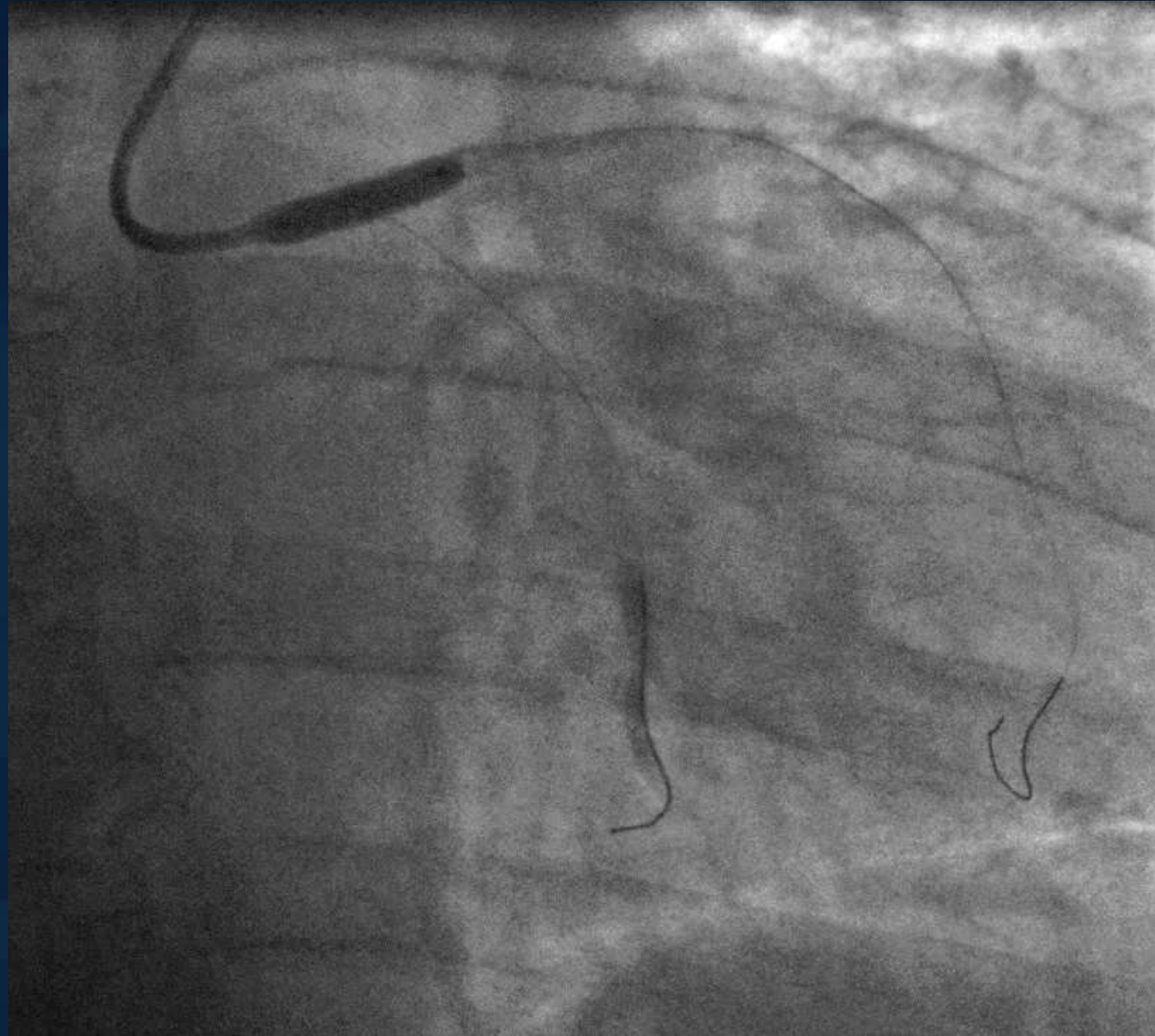
# 56 yrs old male patient, NSTEMI



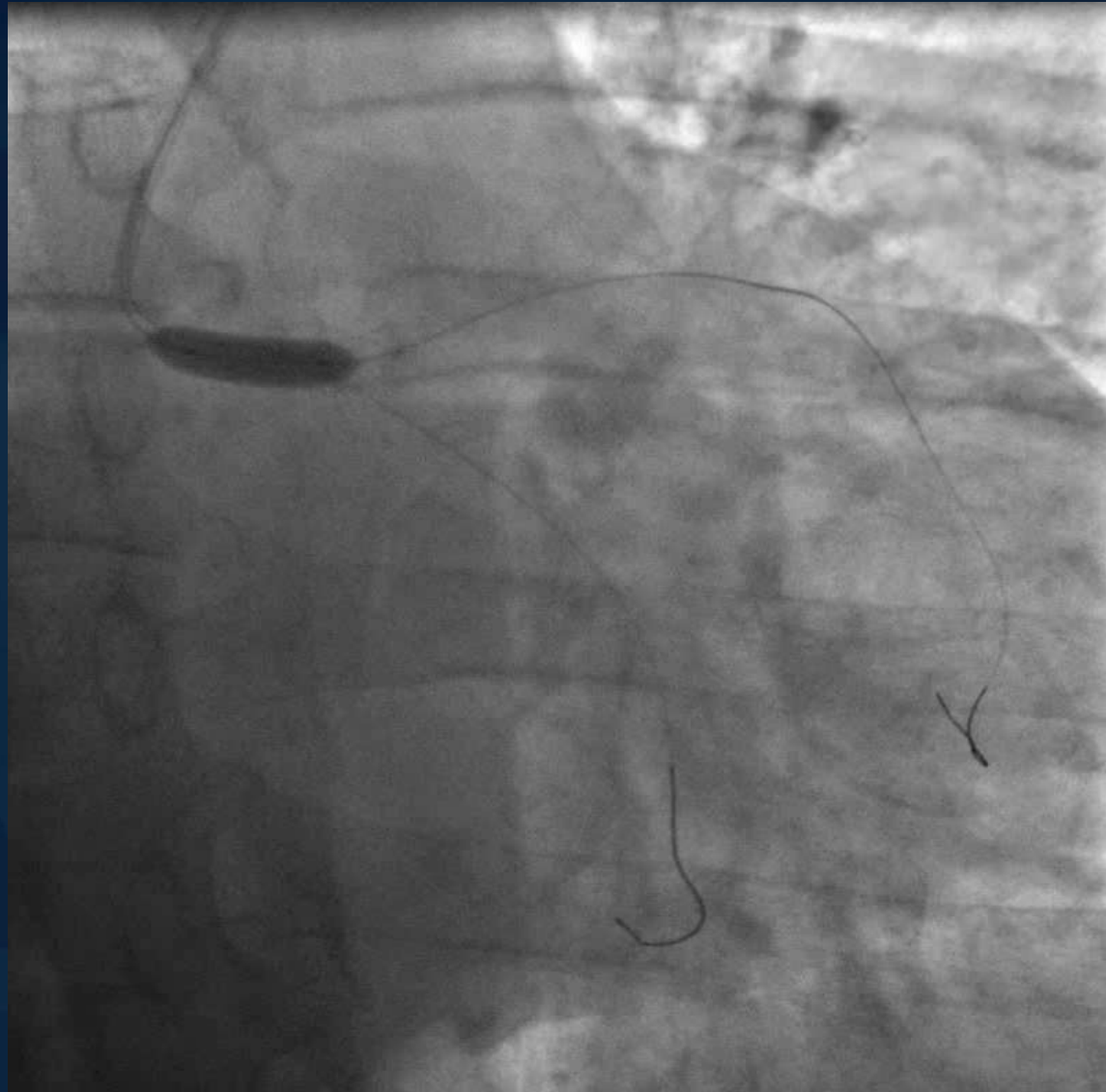
# 56 yrs old male patient, NSTEMI



# 56 yrs old male patient, NSTEMI



# 56 yrs old male patient, NSTEMI

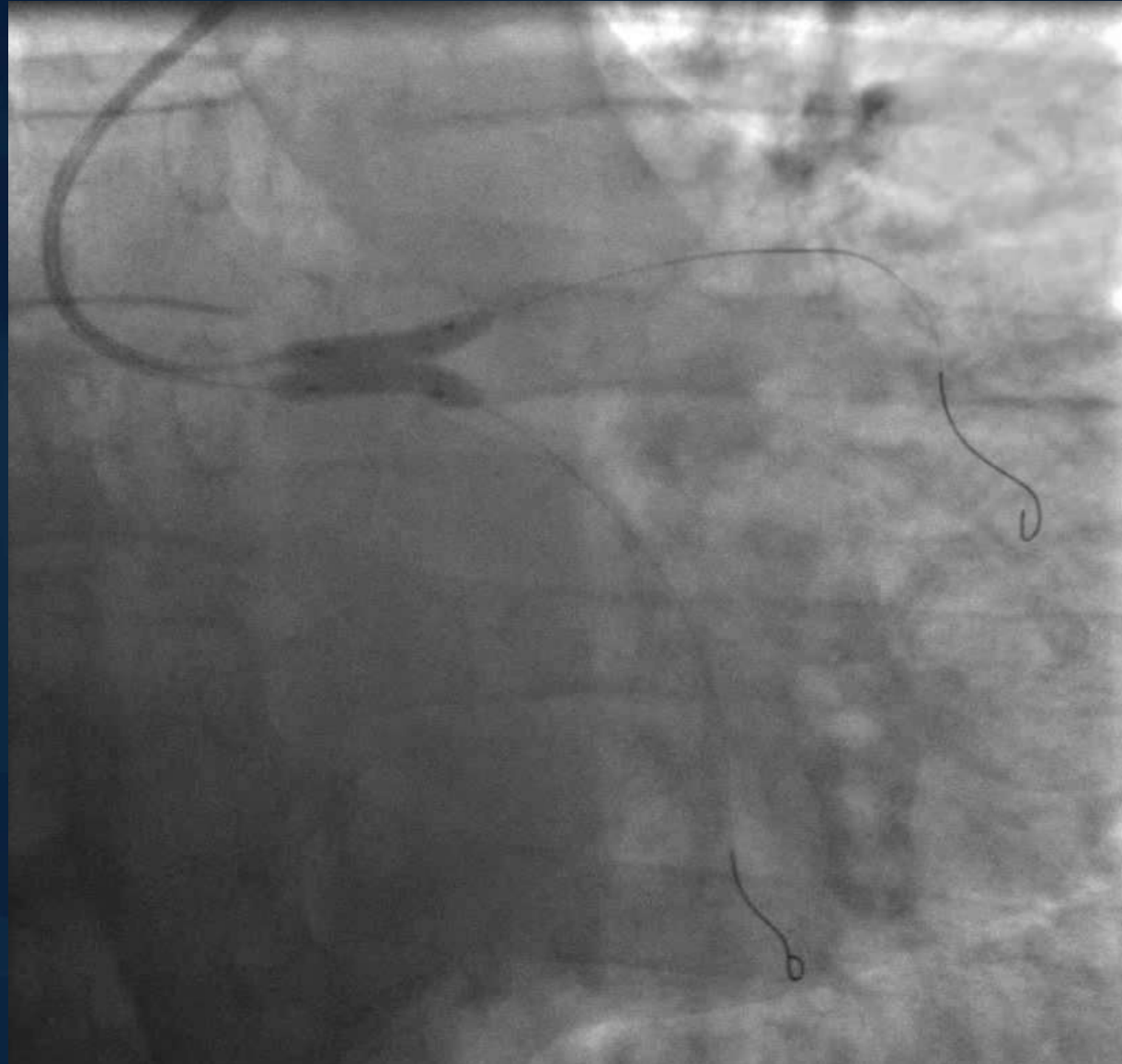


# 56 yrs old male patient, NSTEMI

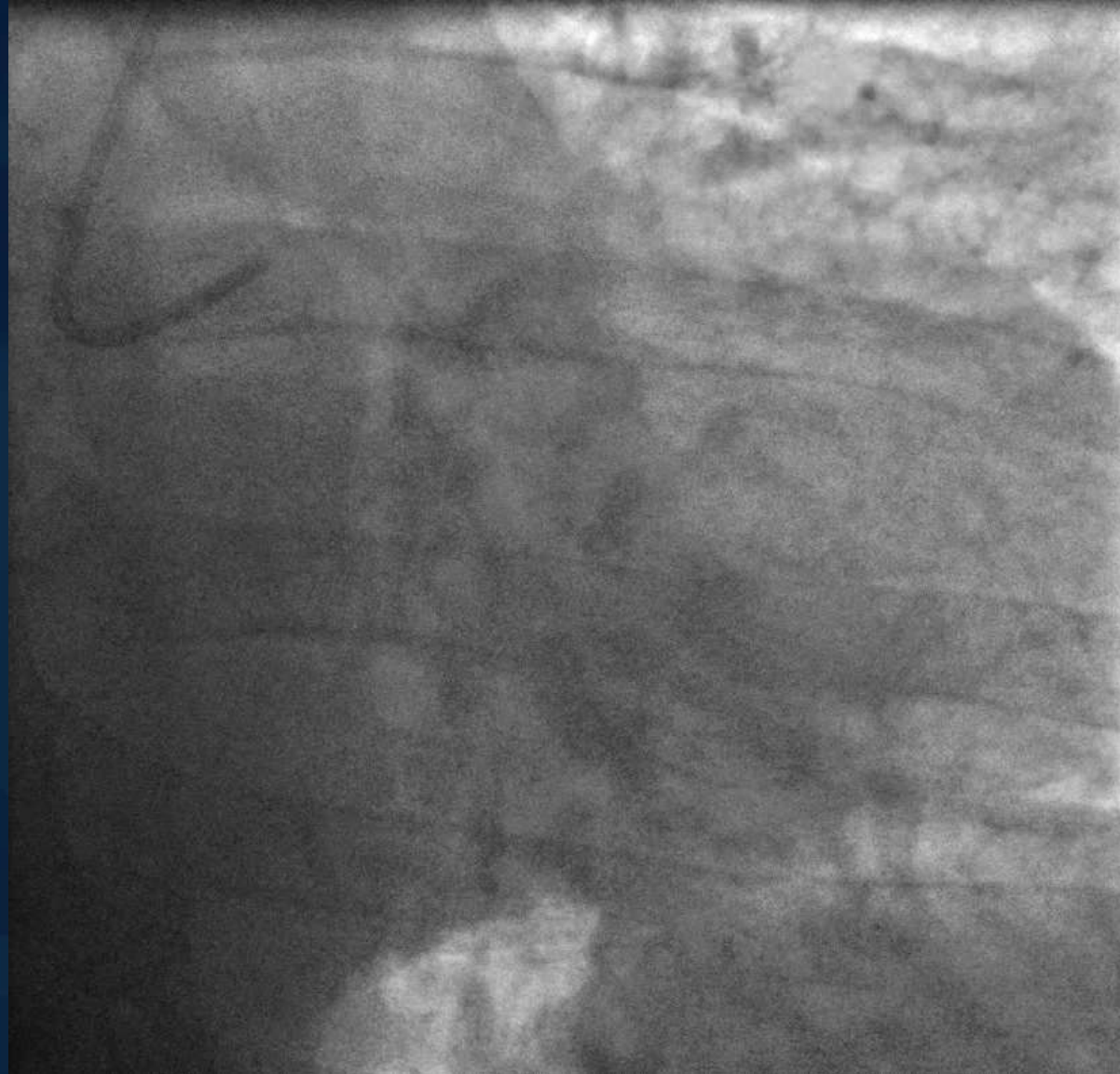




# 56 yrs old male patient, NSTEMI



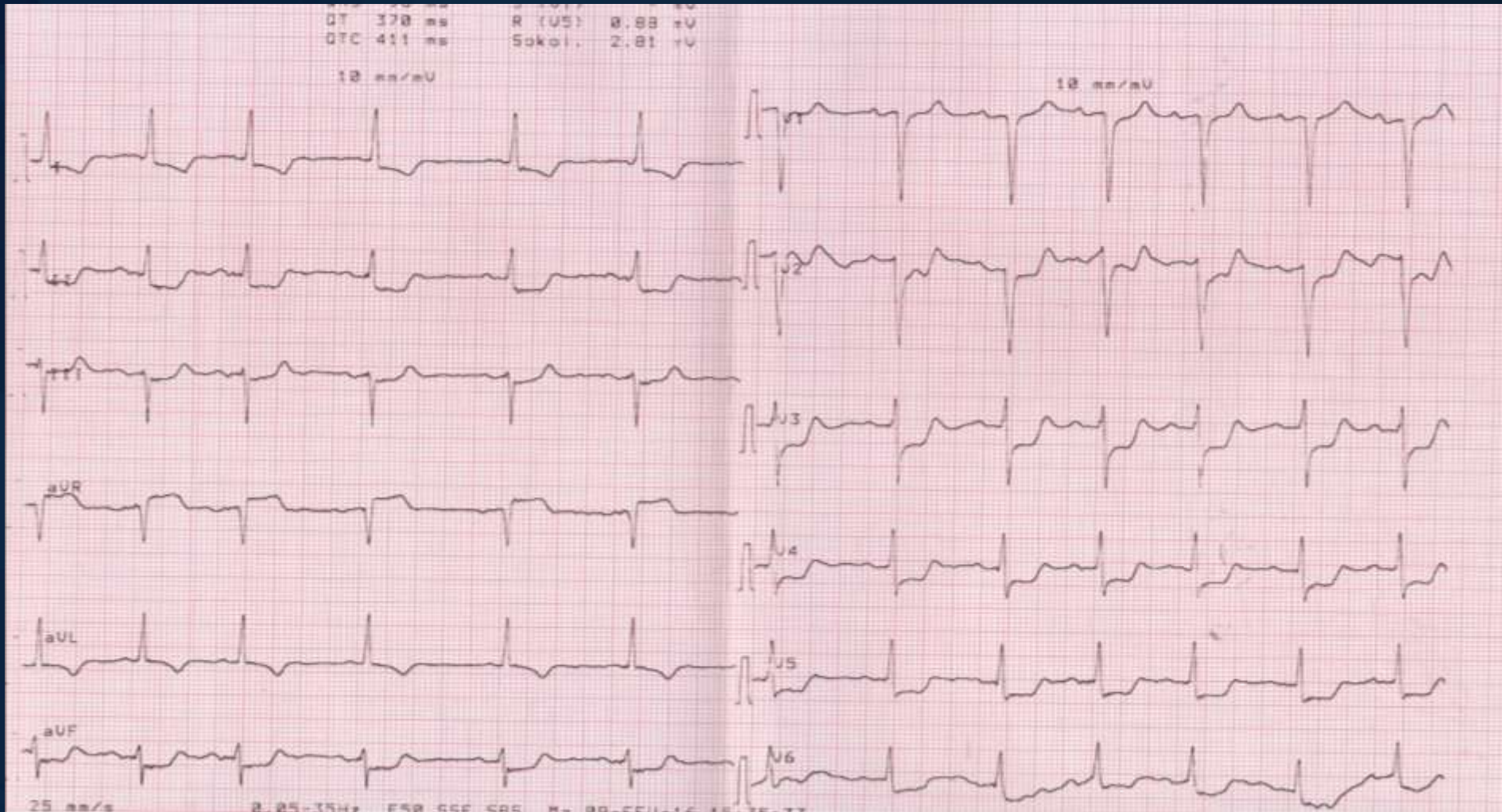
# 56 yrs old male patient, NSTEMI



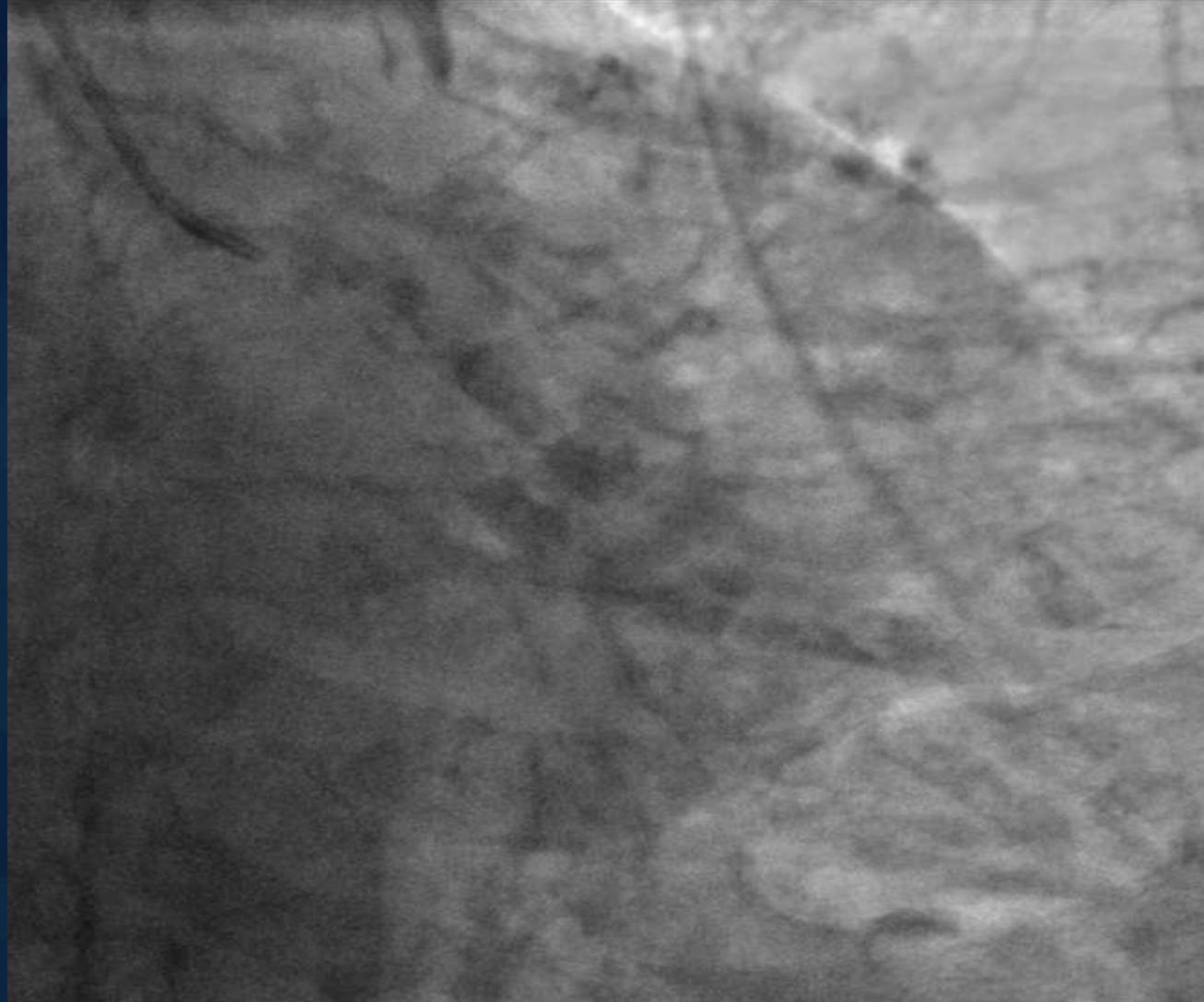
# Women 86 yrs old, severe NSTEMI

- ❑ 160 cm, 72 Kg
- ❑ Diabetes, HBP
  
- ❑ Moderate effort angina since 2 years
- ❑ Recent accelerated angina
- ❑ Prolonged chest pain 30 minutes, tropo +
- ❑ Creatinin Clairance 35ml/min.

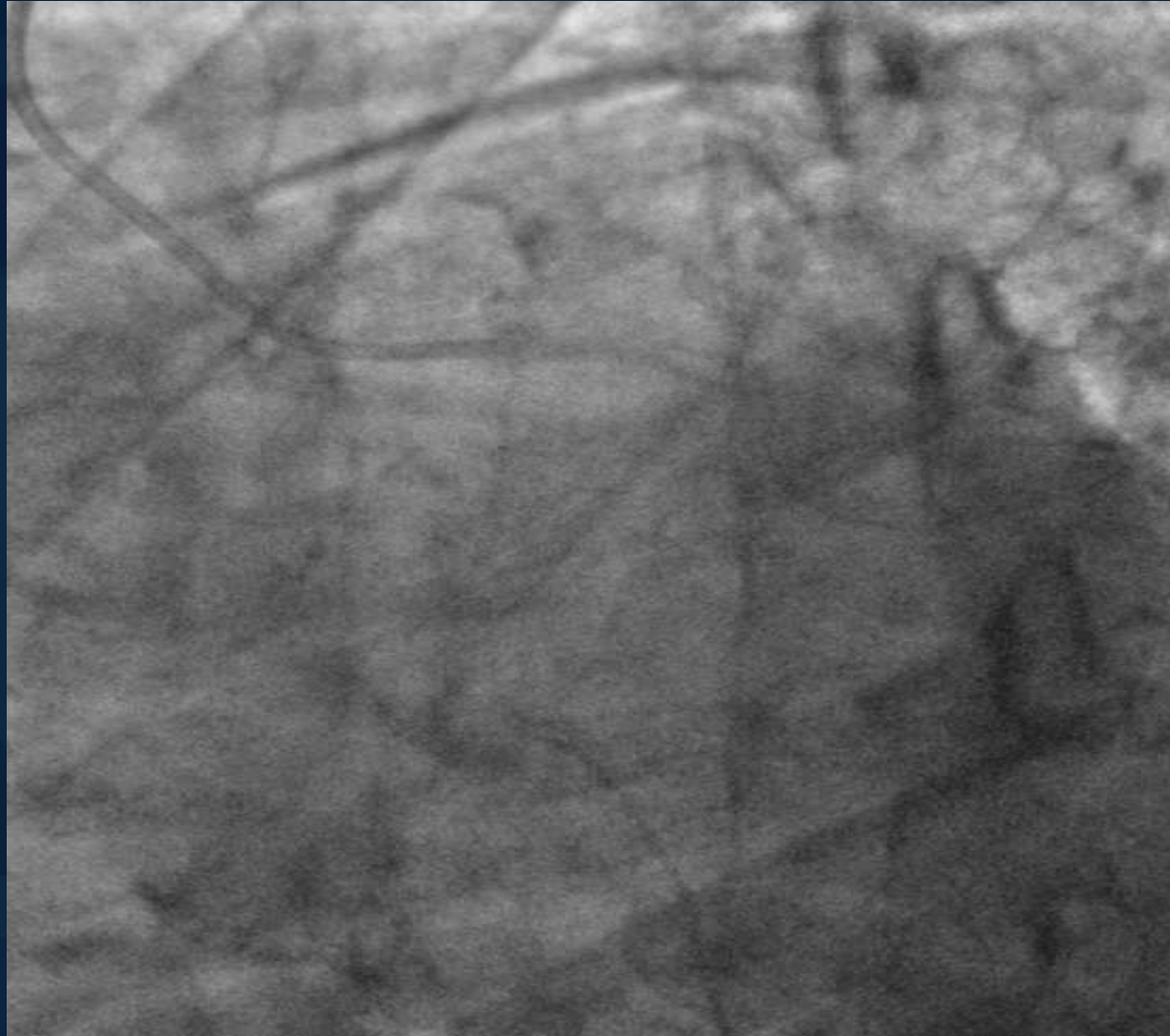
# Women 86 yrs old, severe NSTEMI



# Women 86 yrs old, severe NSTEMI



# Women 86 yrs old, severe NSTEMI



# Women 86 yrs old, severe NSTEMI



# Heart Team Discussion

Women, 86 Yrs old, NSTEMI

3 vessel disease (Syntax scoree 36), distal LM 1,1,1

EF 52%

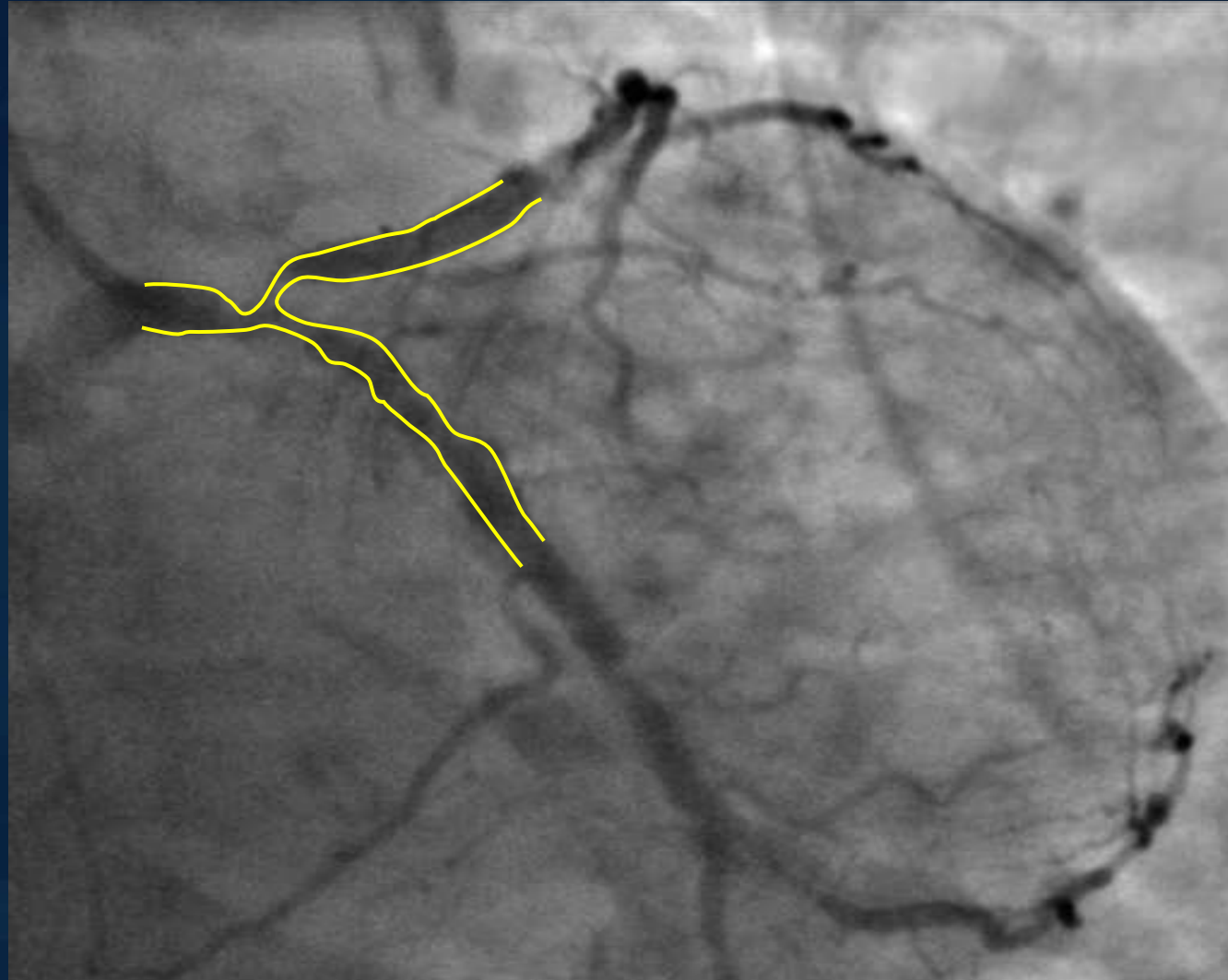
**Syntax score 2**

4 years mortality CABG 44%

4 years mortality PCI 17%



# Heart Team Discussion



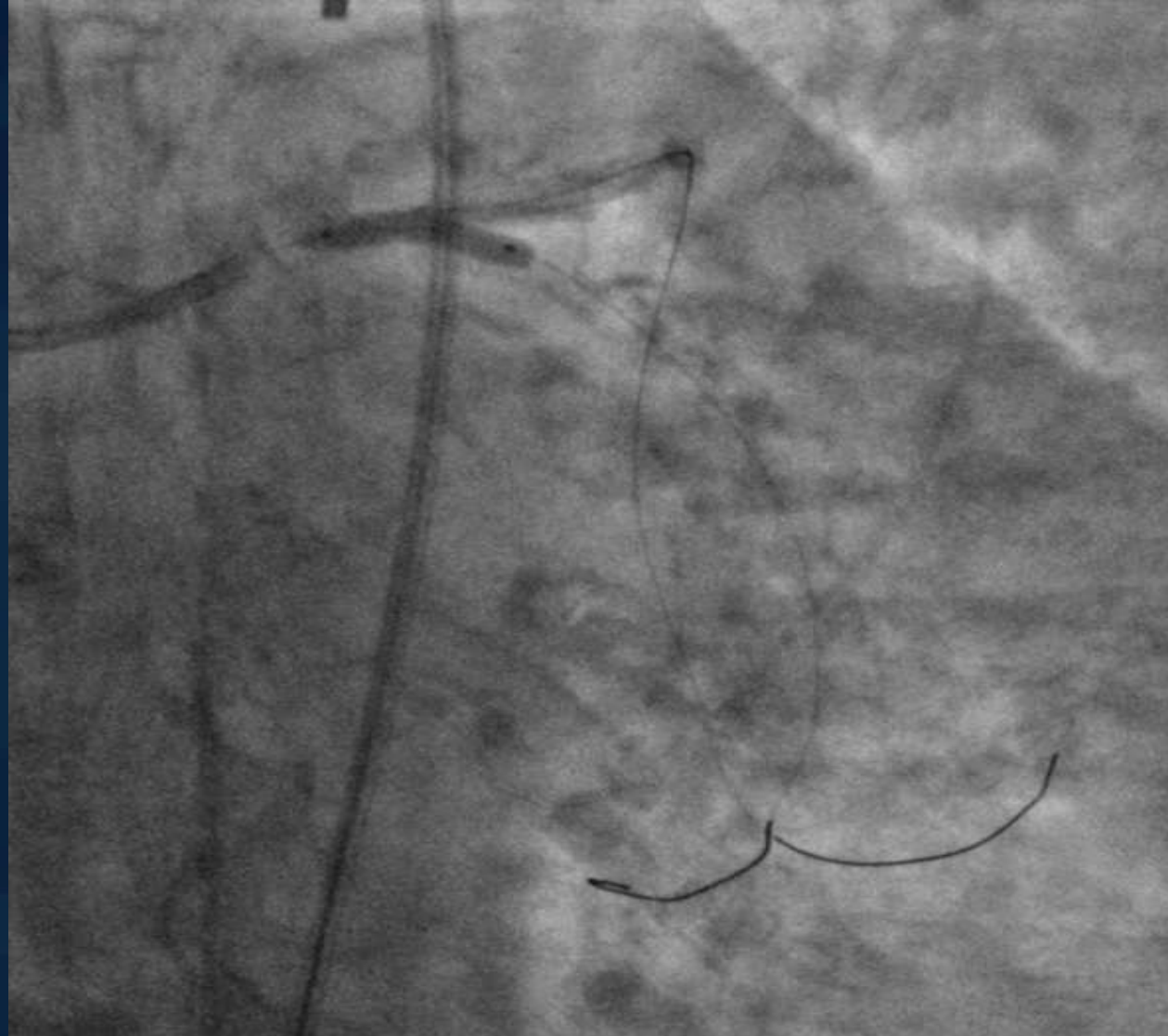
# Women 86 yrs old, severe NSTEMI



# Women 86 yrs old, severe NSTEMI



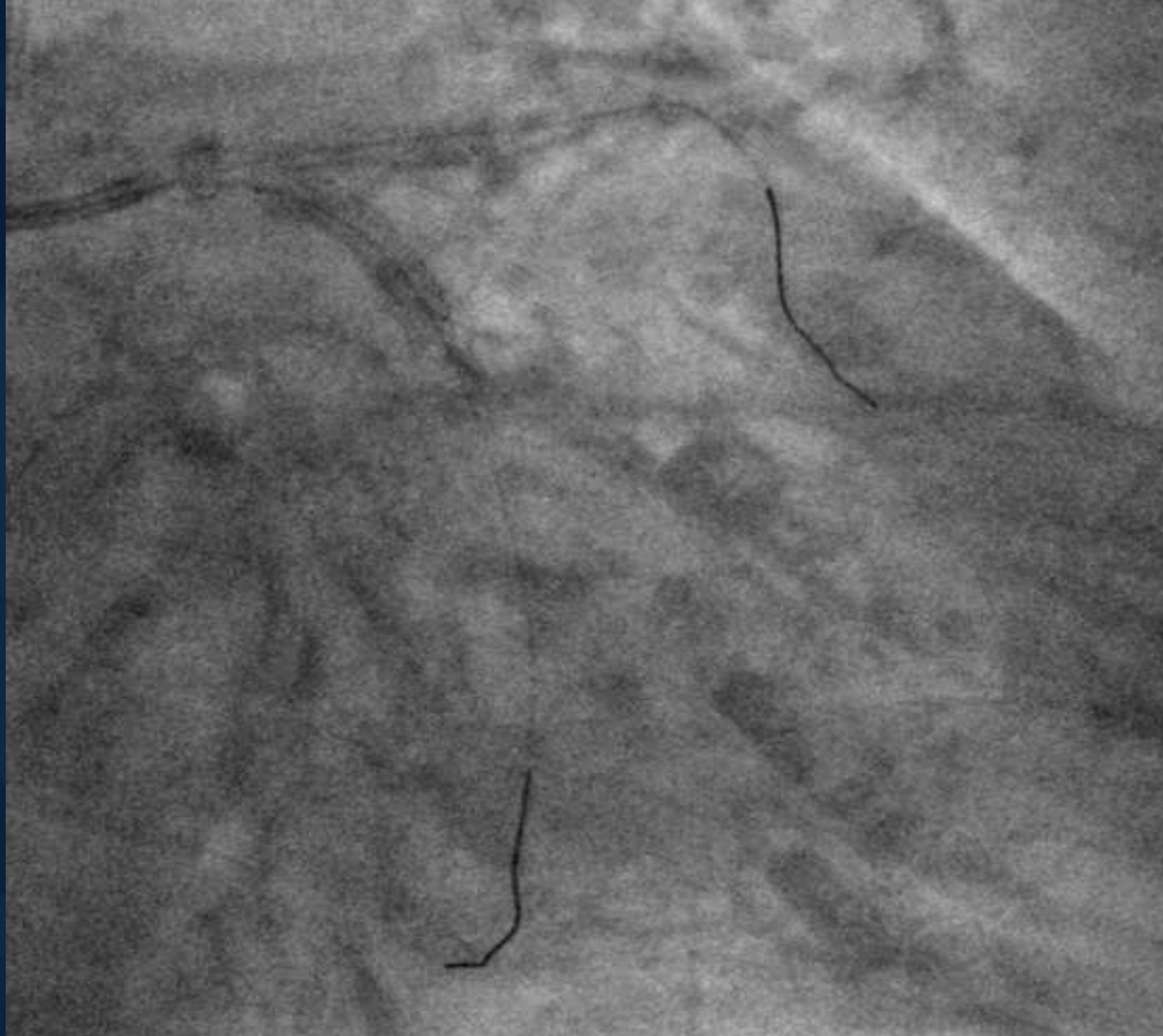
# Women 86 yrs old, severe NSTEMI



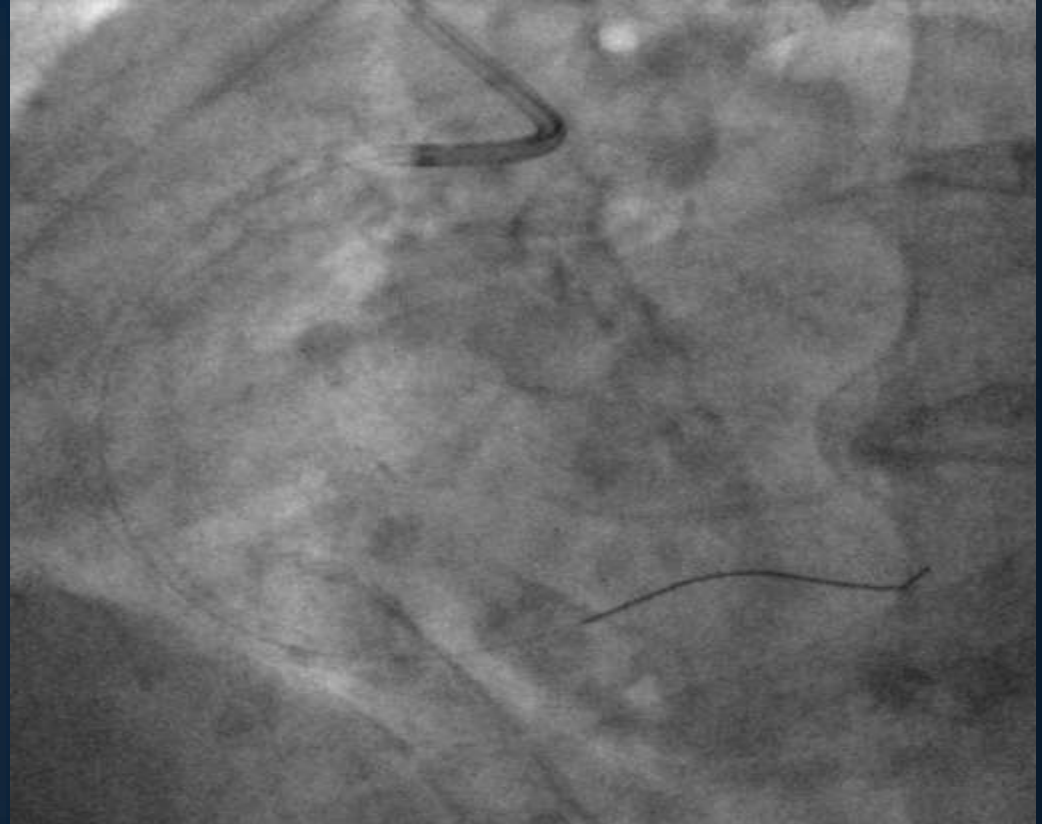
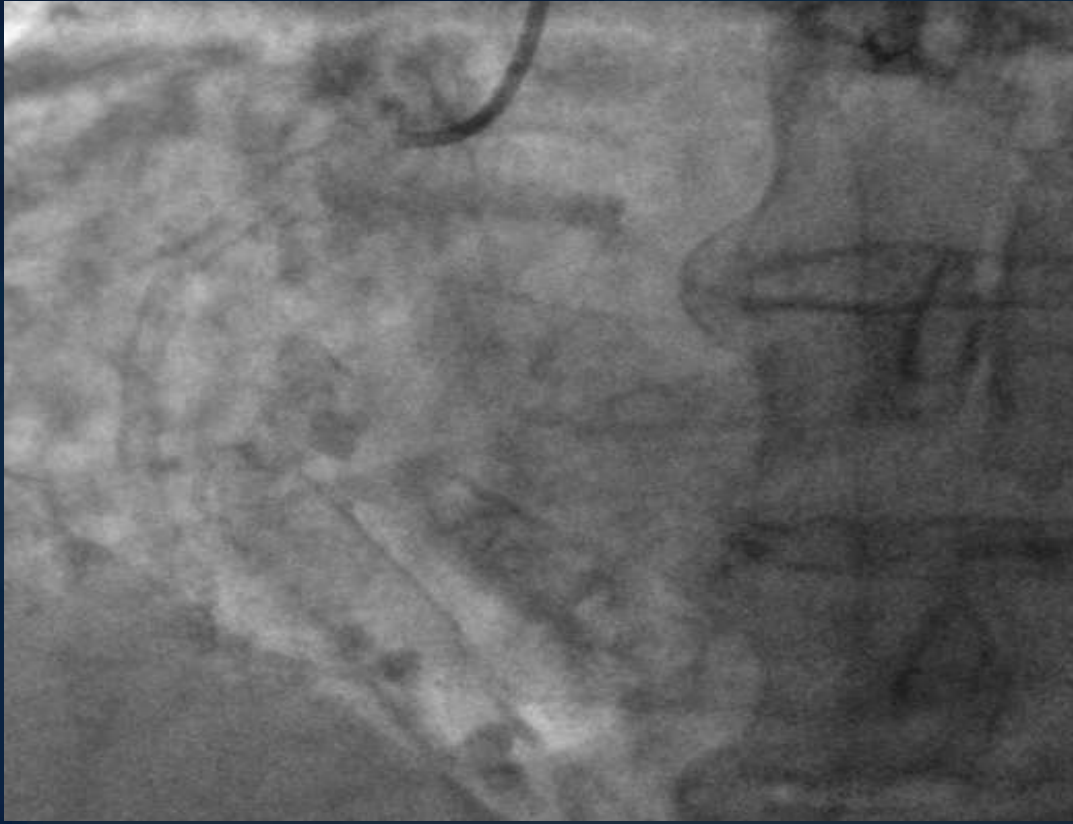
# Women 86 yrs old, severe NSTEMI



# Women 86 yrs old, severe NSTEMI



# Women 86 yrs old, severe NSTEMI



3 weeks later

# Conclusion / Take-home Message

